



# Generalized Land Status


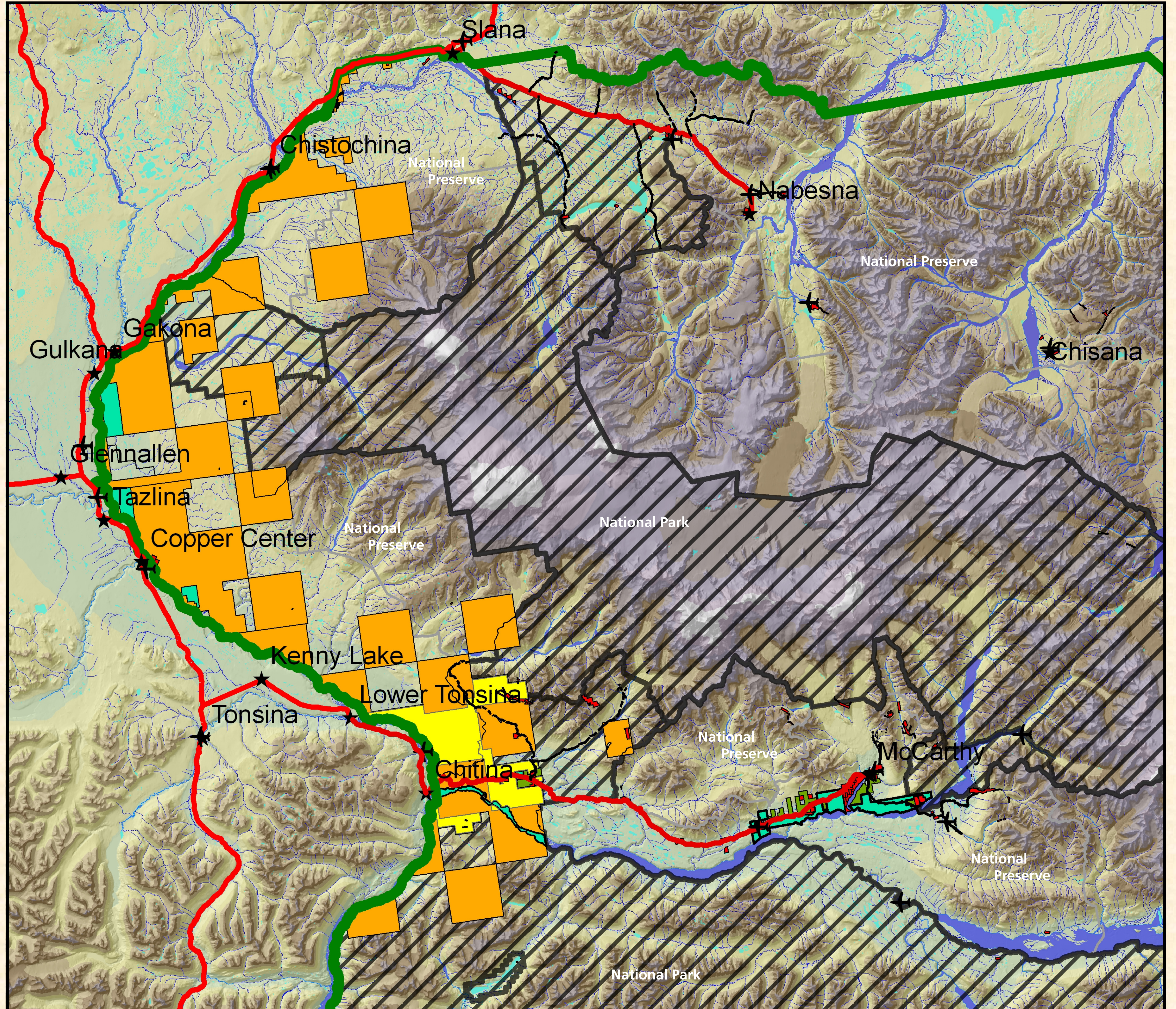
There are approximately 750,000 acres of non-federal lands within the external boundaries of Wrangell-St. Elias National Park & Preserve. The major non-federal land managers include Ahtna Inc., Chugach Alaska Corporation, Chitina Native Corporation, State of Alaska, University of Alaska, and numerous smaller private property owners. For additional information and details regarding the location and boundary between federal and private lands, and public easements across Native lands, contact the National Park Service at Copper Center, Slana or McCarthy.

**Legend**

- Public Rd/Hwy
- Park Boundary
- Park/Preserve
- Ahtna Inc.
- Chitina Native Corporation
- State of Alaska
- University of Alaska
- Private Lands

There are numerous small tracts of private lands in the McCarthy/Kennicott area and along the McCarthy and Nabesna Road corridors. We request that you become familiar with the land status including the location of public easements in the area which you plan to travel.

Please respect private property and contact the appropriate non-federal landowner regarding any requirements they may have before entry onto their land.

**Ahtna Inc.**  
P.O. Box 649  
Glennallen, AK 99588  
Phone: 907-822-5234  
Fax: 907-822-3495

**Chitina Native Corporation**  
P.O. Box 3  
Chitina, Alaska 99566  
Phone: 907-823-2223  
Fax: 907-823-2202

**University of Alaska  
Land Management**  
3890 University Lake Drive, Suite 103  
Anchorage, Alaska 99508  
Phone: 907-786-7766  
Fax: 907-786-7733

**Public Information Center  
Alaska Dept of Natural Resources**  
Robert Atwood Building  
550 W. 7th Ave, Suite 1260  
Anchorage, AK 99501-3557  
Phone: 907-269-8400  
Fax: 907-269-8901

**Wrangell-St. Elias  
National Park & Preserve**  
National Park Service  
106.8 Richardson Highway  
PO Box 439  
Copper Center, AK 99573  
Phone: 907-822-5234  
Fax: 907-822-7216

