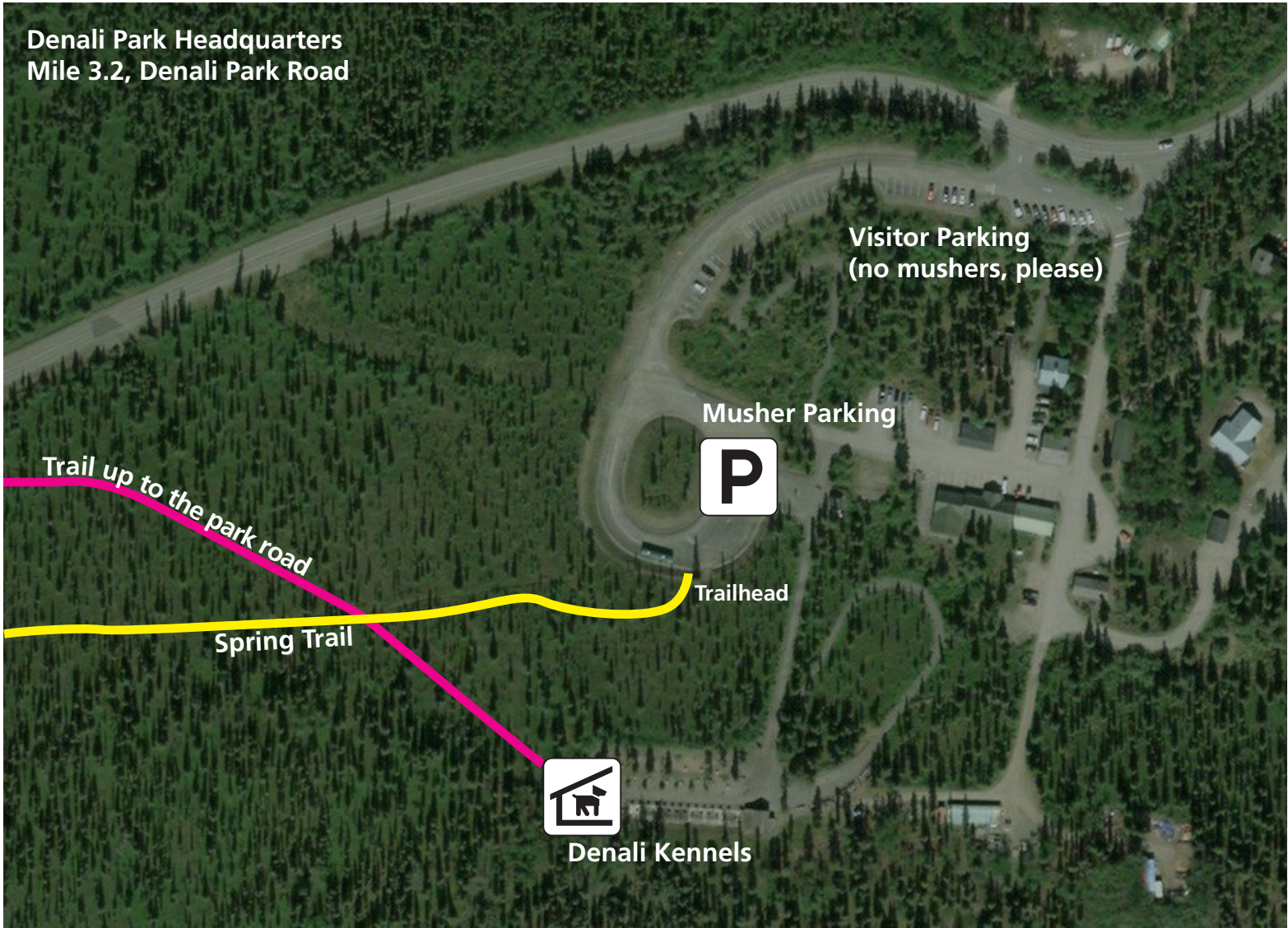


Musher Parking

National Park Service
U.S. Department of the Interior
Denali National Park and Preserve, Alaska



Denali Park Headquarters
Mile 3.2, Denali Park Road



Details

- Please use the trail entrance at the south side of the bus loop. This short exit trail will join with the Spring Trail and head west along the trail (continue straight) or up to the road (right at the junction).
- Mushers may use the large cement blocks as tie-offs and can leave their vehicles parked in the area.
- Be sure to leave room for other mushers' trucks to move in and out if another team comes by.
- If you plan on mushing the road, call the park (907-683-9532) to find out if the conditions are safe for sleds. Otherwise, walk some of the road to check whether on conditions before you pull hook.