

Road and Trails

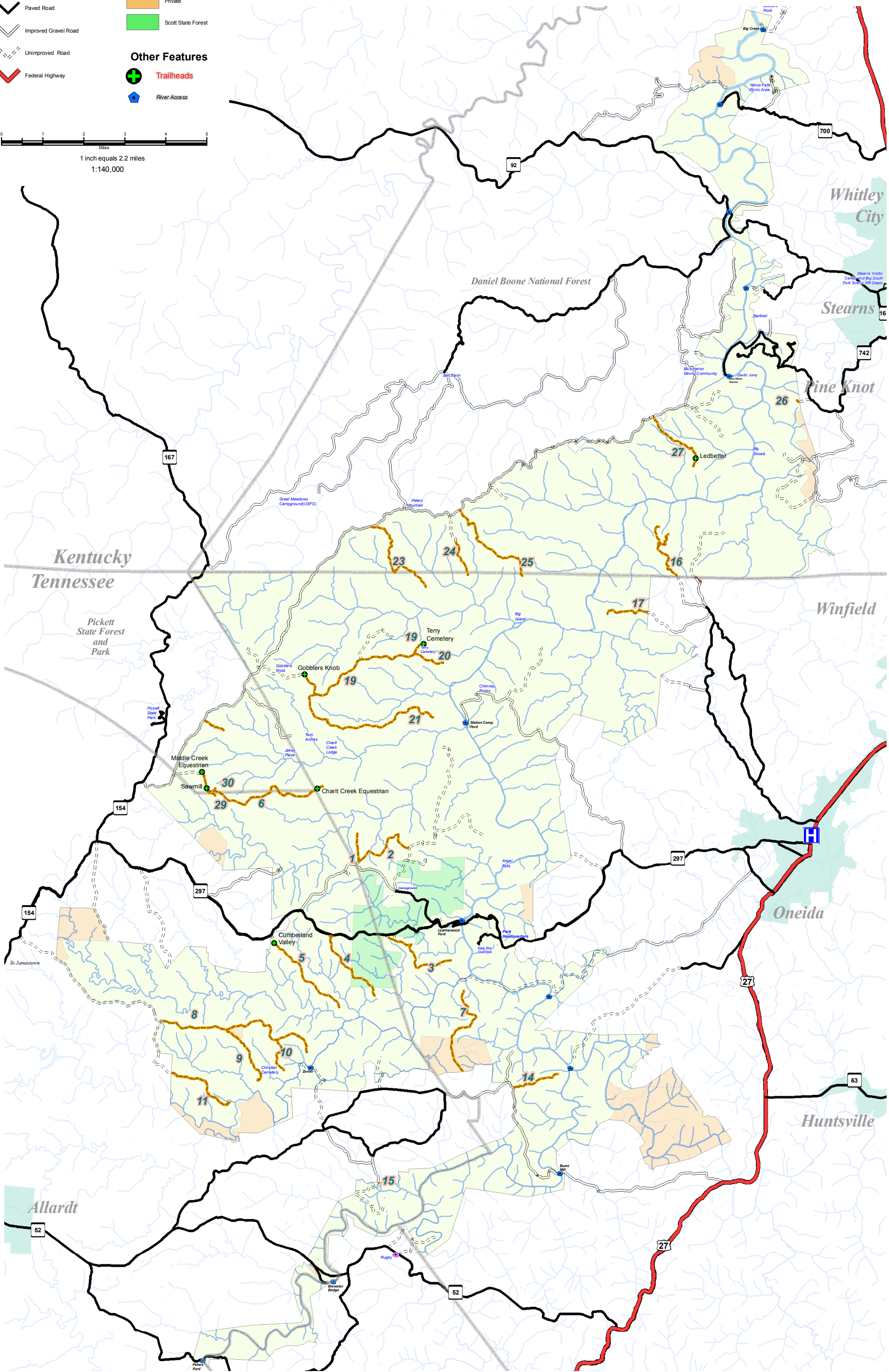
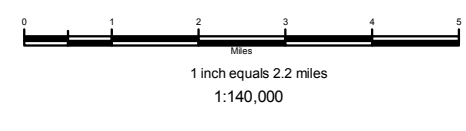
- Multiple Use Trail
- Paved Road
- Improved Gravel Road
- Unimproved Road
- Federal Highway

Land Ownership

- National Park Service
- Private
- Scott State Forest

Other Features

- Trailheads
- River Access



ROUTES OPEN FOR BIG GAME SEASON

1. Black House Branch from West Bandy Road to gate (this section is a part of the Jacks Ridge Loop Trail (segment A) **OPEN**
2. Duncan Hollow Bypass Trail from Black House Branch to Duncan Hollow Road **OPEN**
3. Leatherwood Overlook Trail (aka White Pine Road aka Leatherwood Overlook Spur (segmentA)) Located off Hwy 297 **OPEN**
4. Gar Blevins Trail (Gar Blevins Multiple use Trail (segment A, B) **OPEN** Located off of Hwy 297 **OPEN**
5. Cumberland Valley Trail from parking lot to gate (aka Gernt Road) Cumberland Valley Loop (Segment A, E) Located West Ent. Off Hwy 297 **OPEN**
6. Fork Ridge Trail (aka Fork Ridge Road) from Middle Creek Equestrian Trailhead to power line. This includes going into the Dirt Rockhouse Cemetery and going to the fire tower (this road however is closed due to trees and bad conditions) Fork Ridge is **OPEN**
7. Hurricane Ridge Road from Mt. Helen Road to Hole in the Ridge. This road is on private property (differed) then goes into the park and becomes Hurricane Ridge Trail. **OPEN**
8. Darrow Ridge Trail from intersection of Tar Kiln to end of Ridge past Cactus Rock. **OPEN**
9. Christian Cemetery from Darrow Ridge to cemetery where there is a closure, so it is horse Only to O&W. There are no spurs off of this road that are open to ATV's at this time. Christian Cemetery Trail (Segment A, B, C) **OPEN**
10. Little Cliff off of Darrow Ridge to gorge. It will be horse only after this point. **OPEN**
11. Tar Kiln Trail off of Tar Kiln open to gorge then it will be horse only after this point to O&W. **OPEN**
12. Tar Kiln Spur off of Tar Kin Trail open to gorge then it will be horse only after this point to O&W **OPEN**
13. Mill Creek Trail (aka Range Cemetery Road) open to gorge closure (in place already — sign) **OPEN** Located off of Mt. Helen Road.
Not on map-Site Review
14. Forks of the River Trail off of Burnt Mill Bridge Road (aka Honey Creek Road) goes from road out to closure. A trail goes to the left at closure then goes to end of ridge. This part of the trail is not Forks of the River Trail. The Forks of the River Trail from Burnt Mill Road to the closure is open. Past the closure is closed. The beginning of the trail is located near the turn off to Honey Creek Overlook Road. (Also noted as John Muir Trail Segment B) 1/2 CLOSED
15. Joe Branch Trail (it consists of around 100 feet) It is located at park boundary at old road. This is so horses would be legal to ride into park off of main road.
16. Paul T. West Trail and spur. This is located in the Foster Crossroads area. The spur off of this goes to the cemetery (Duncan Cemetery). **OPEN**
17. Hurricane Ridge Trail and spur. This is located off of Rob Watson Road in the Foster Crossroads area.
18. Red Rock Trail located on Red Rock Road off of Williams Creek. The trail going into park is very short. It is closed not far from boundary because off trees from 1998 storm and pine beetles. **CLOSED** *Not on map*
19. Terry Cemetery Trail from Gobblers Knob Equestrian Trailhead to Terry Cemetery. **OPEN**
20. Watson-Pennington Cemetery Trail to gate closure at gorge. This is off of Terry Cemetery. **OPEN**
21. Hatfield Ridge — Open from Terry Cemetery Trail to gate closures. Not allowed out overlook trail. **OPEN**
22. Station Camp to Bear Creek Connector is actually the same as the Paul T. West Trail and spur. **OPEN**
23. Stoopin Oak Trail. Starts from Laurel Ridge Road/Divide Road to gorge closure. No spurs off of this trail. **OPEN**
24. Guy Kidd Trail. Located off of Laurel Ridge Road/Divide Road. It is considered a road to Guy Kidd Cemetery and multiple use after that. **OPEN**
25. Laurel Hill Trail. Located off of Laurel Ridge Road/Divide Road. No spurs off of this trail. (AKA part of Kentucky Trail 30) **OPEN**
26. Laurel Branch Trail. Located off of hwy 742, used to access Lee Hollow Loop. Unknown condition.
27. Bald Knob- Hill Cemetery Trail (aka Ledbetter Road; Old Bear Creek Crossing Road, and part of Kentucky Trail 26) Located off of Laurel Ridge Road/Divide Road. **OPEN**
28. Wolf Ridge Divide Trail located in KY — Unknown condition. *Not on map*
29. Dirt Rockhouse Cemetery Trail, Off Fork Ridge Road and Trail **OPEN**
30. Fire Tower Trail, Off Fork Ridge Road and Trail **OPEN**

The following is a list of trails that are closed and/or not been constructed yet (these are all off of Darrow Ridge Trail.)

Upper Panther Branch Trail *Not on map-Site Review*

Arch Trail *Not on map-Site Review*

Dump Trail *Not on map-Site Review*

Flat Bottom Trail *Not on map-Site Review*