

Road and Trails

- | | | | | | | | |
|--|---------------|--|--------------------|--|----------------------|--|----------|
| | Hike | | Wagon | | Improved Gravel Road | | Railroad |
| | Horse | | Multiple Use Trail | | Unimproved Road | | |
| | Mountain Bike | | Paved Road | | Federal Highway | | |

National Trails

- Sheltowee Trace
- John Muir Trail

Land Ownership

- National Park Service
- Private
- Scott Slate Forest

Points of Interest

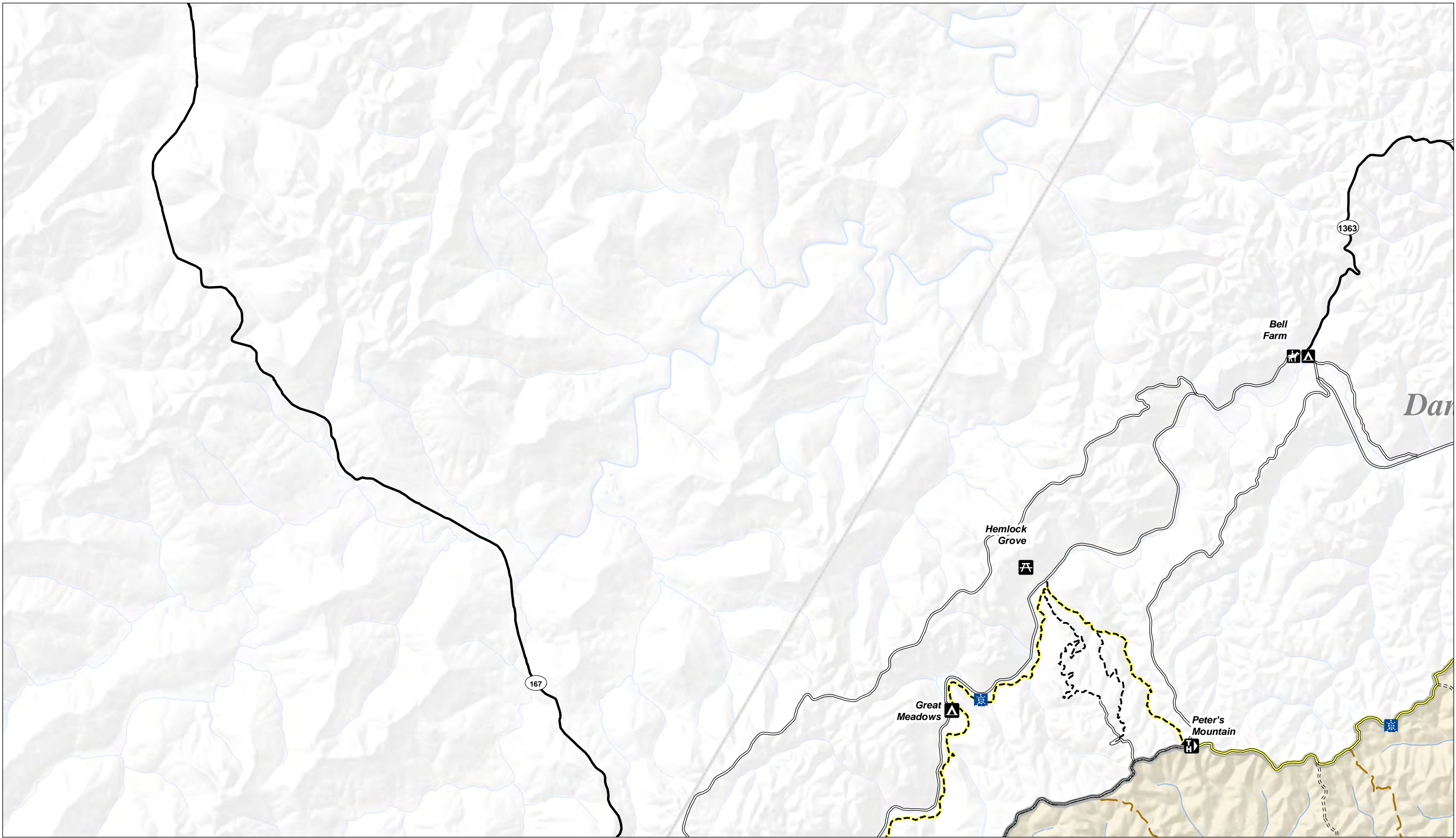
- | | | | | | |
|--|----------------|--|------------------|--|-----------|
| | Ranger Station | | Picnic Area | | Airport |
| | Visitor Center | | Camping | | Hospital |
| | Overlook | | Hiking Trailhead | | Arch |
| | Boat Launch | | Horse Trailhead | | Waterfall |



1:48,000

Sheet 1 of 9





Road and Trails

	Hike		Wagon		Improved Gravel Road		Railroad
	Horse		Multiple Use Trail		Unimproved Road		
	Mountain Bike		Paved Road		Federal Highway		

National Trails

	Shelton Trace
	John Muir Trail

Land Ownership

	National Park Service
	Private
	Scott Slate Forest

Points of Interest

	Ranger Station		Picnic Area
	Visitor Center		Camping
	Overlook		Hiking Trailhead
	Boat Launch		Horse Trailhead

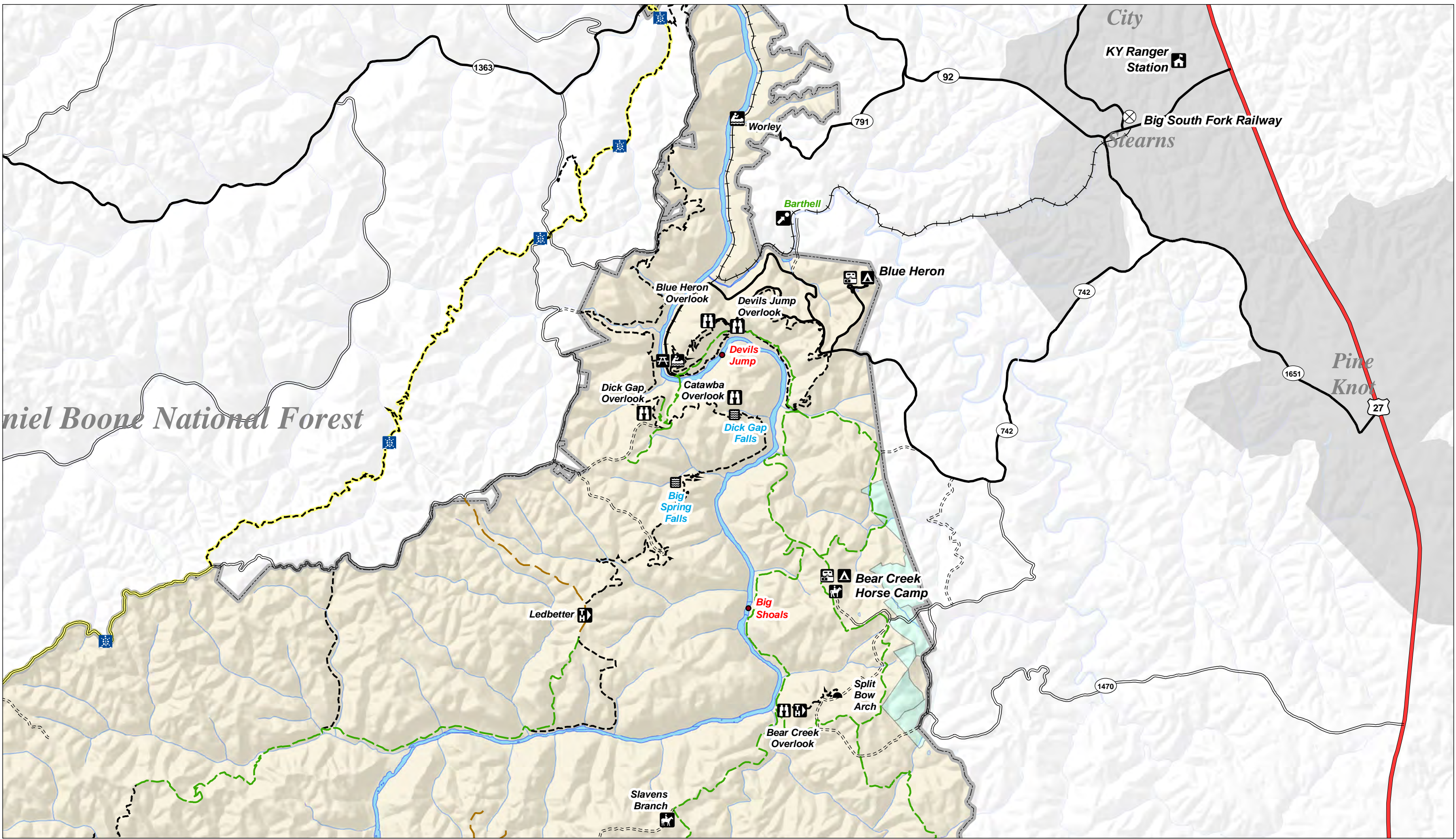
	Airport
	Hospital
	Arch
	Waterfall



1:48,000

Sheet 2 of 9

0 0.25 0.5 1 1.5 2 Miles



Road and Trails

--	--	--	--	--	--	--	--	--	--

National Trails

--	--

Land Ownership

--	--	--

Points of Interest

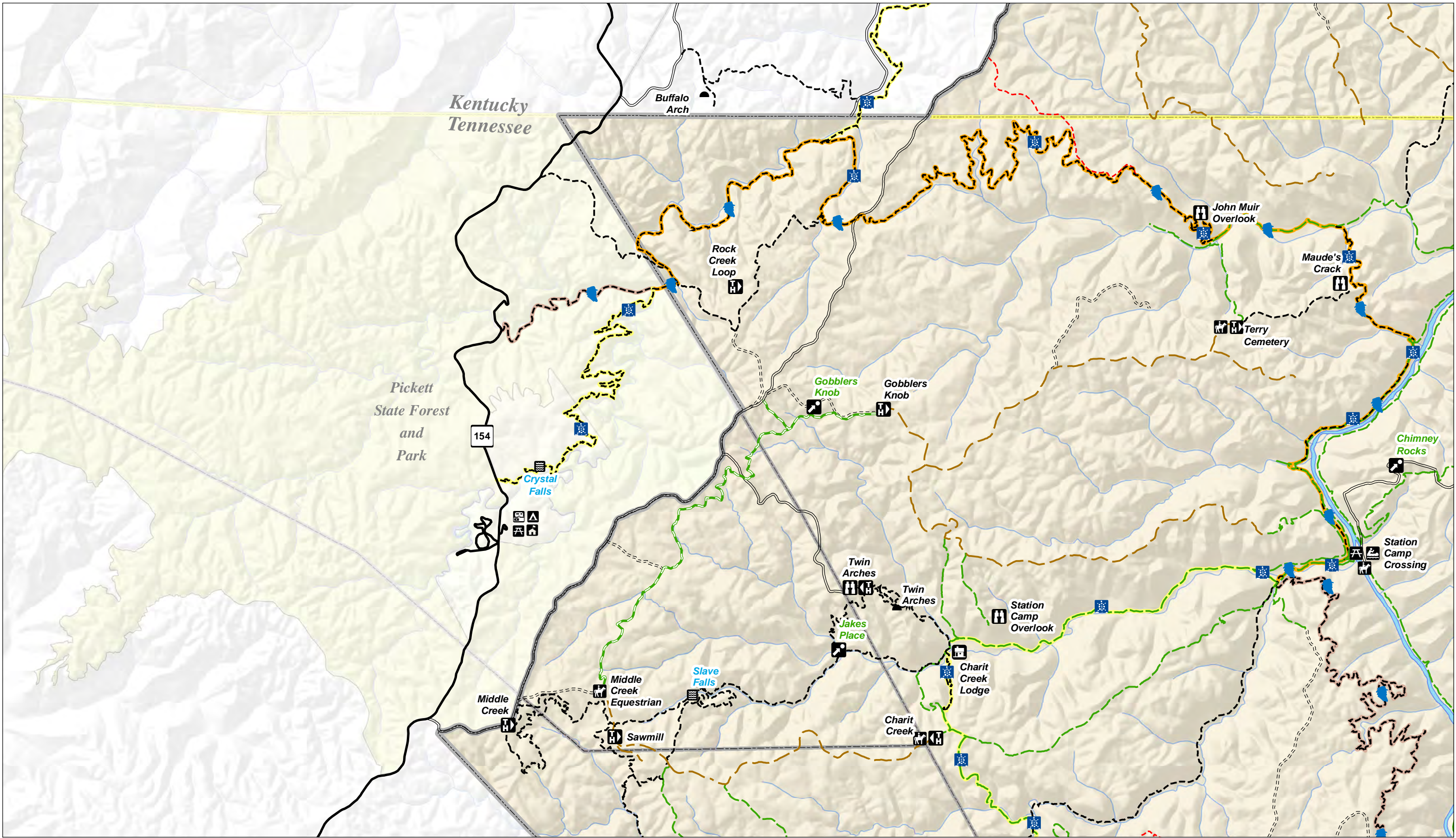
--	--	--	--	--	--	--	--

--	--	--	--

1:48,000

Sheet 3 of 9

0 0.25 0.5 1 1.5 2 Miles



Road and Trails

- | | | | | | | | | | |
|--|--|--|--|--|--|--|--|--|--|
| | | | | | | | | | |
|--|--|--|--|--|--|--|--|--|--|

National Trails

- Shelton Trace
- John Muir Trail

Land Ownership

- National Park Service
- Private
- Scott State Forest

Points of Interest

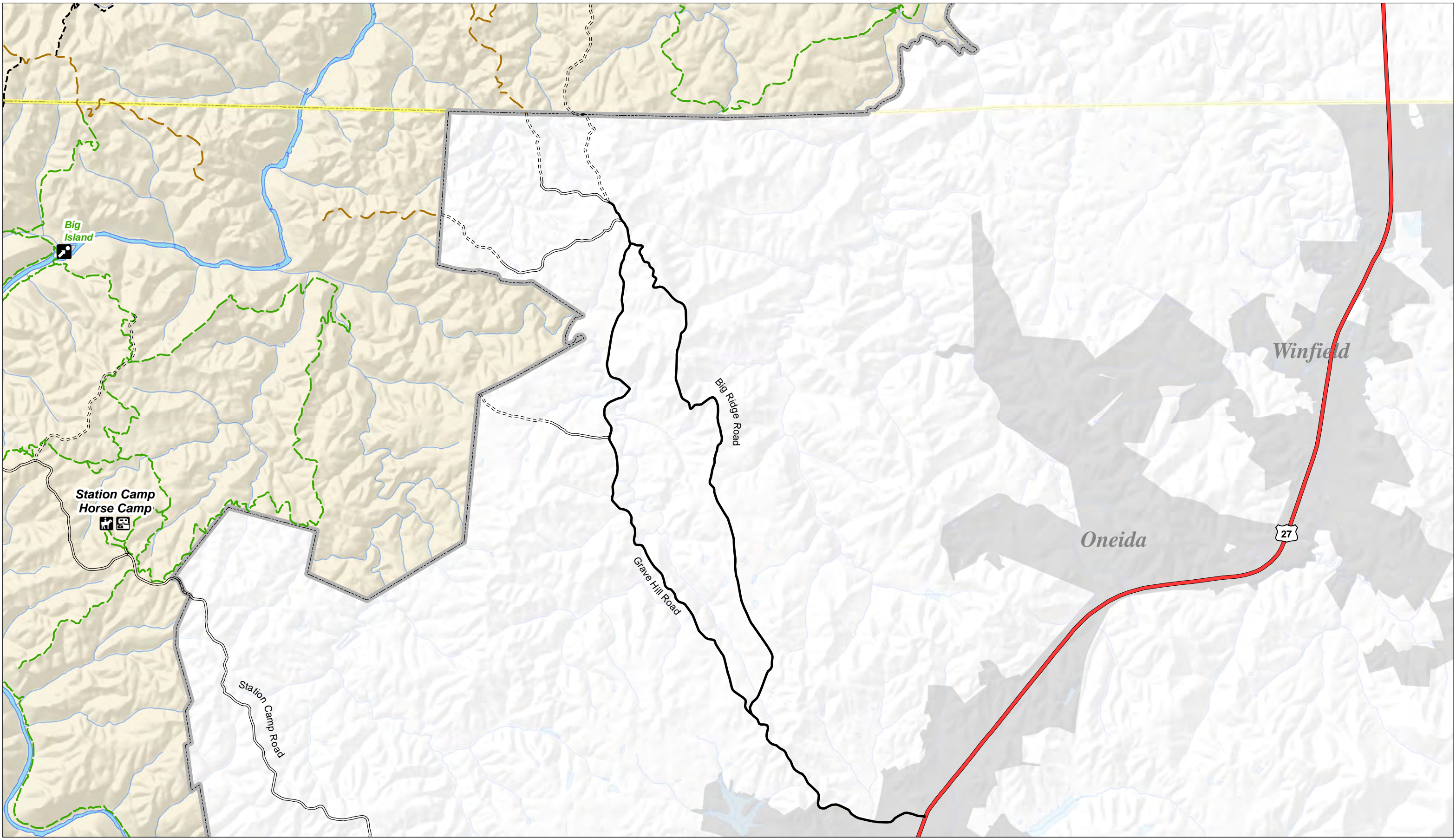
- | | | | | | | | |
|--|--|--|--|--|--|--|--|
| | | | | | | | |
| | | | | | | | |



1:48,000

Sheet 4 of 9

0 0.25 0.5 1 1.5 2 Miles



Road and Trails

- | | | | | | | | |
|--|---------------|--|--------------------|--|----------------------|--|----------|
| | Hike | | Wagon | | Improved Gravel Road | | Railroad |
| | Horse | | Multiple Use Trail | | Unimproved Road | | |
| | Mountain Bike | | Paved Road | | Federal Highway | | |

National Trails

- Sheltoewe Trace
- John Muir Trail

Land Ownership

- National Park Service
- Private
- Scott Slate Forest

Points of Interest

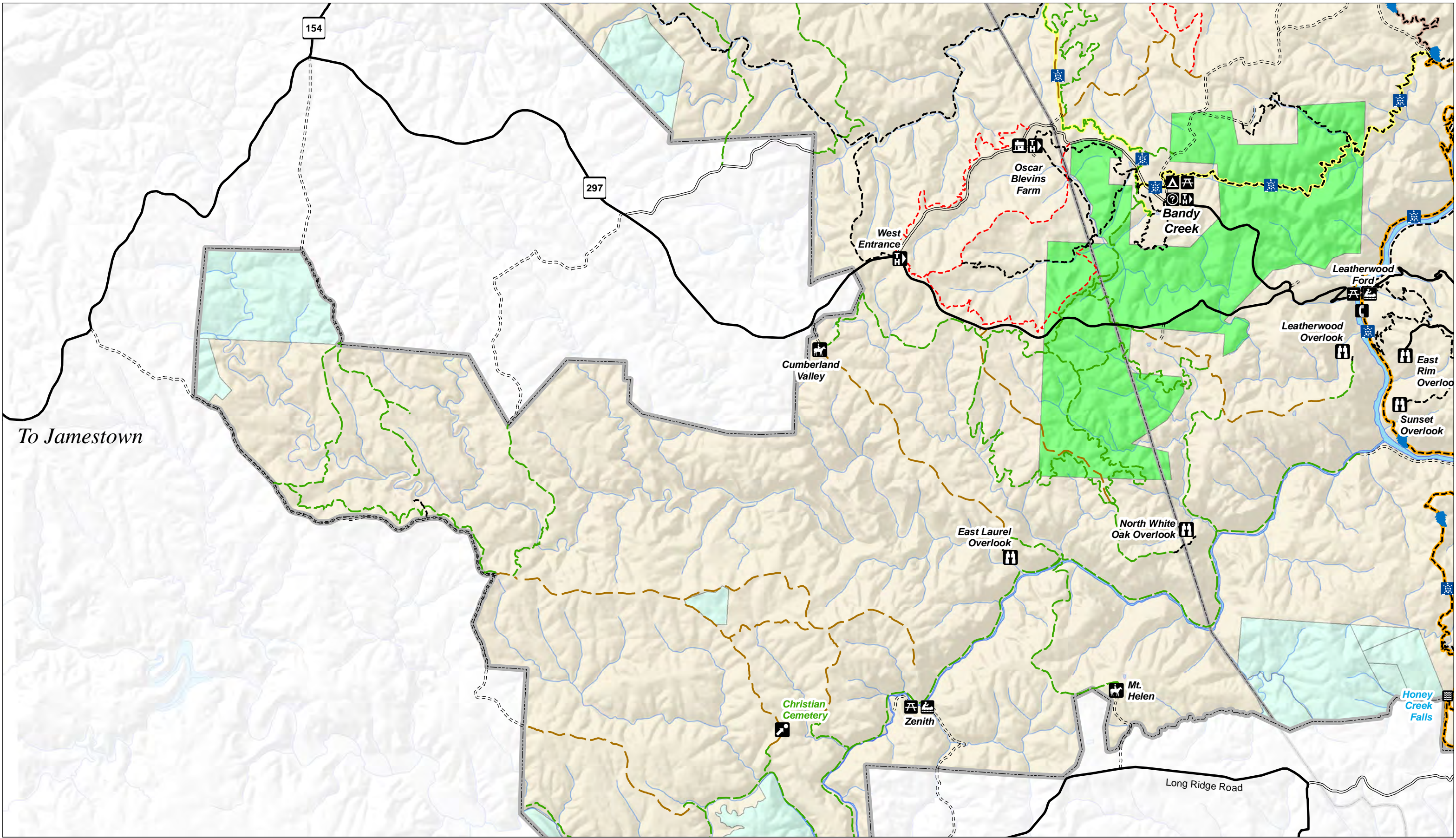
- | | | | | | |
|--|----------------|--|------------------|--|-----------|
| | Ranger Station | | Picnic Area | | Airport |
| | Visitor Center | | Camping | | Hospital |
| | Overlook | | Hiking Trailhead | | Arch |
| | Boat Launch | | Horse Trailhead | | Waterfall |



1:48,000

Sheet 5 of 9





To Jamestown

Road and Trails

- | | | | | | | | | | |
|--|--|--|--|--|--|--|--|--|--|
| | | | | | | | | | |
|--|--|--|--|--|--|--|--|--|--|

National Trails

- Shelton Trace
- John Muir Trail

Land Ownership

- National Park Service
- Private
- Scott State Forest

Points of Interest

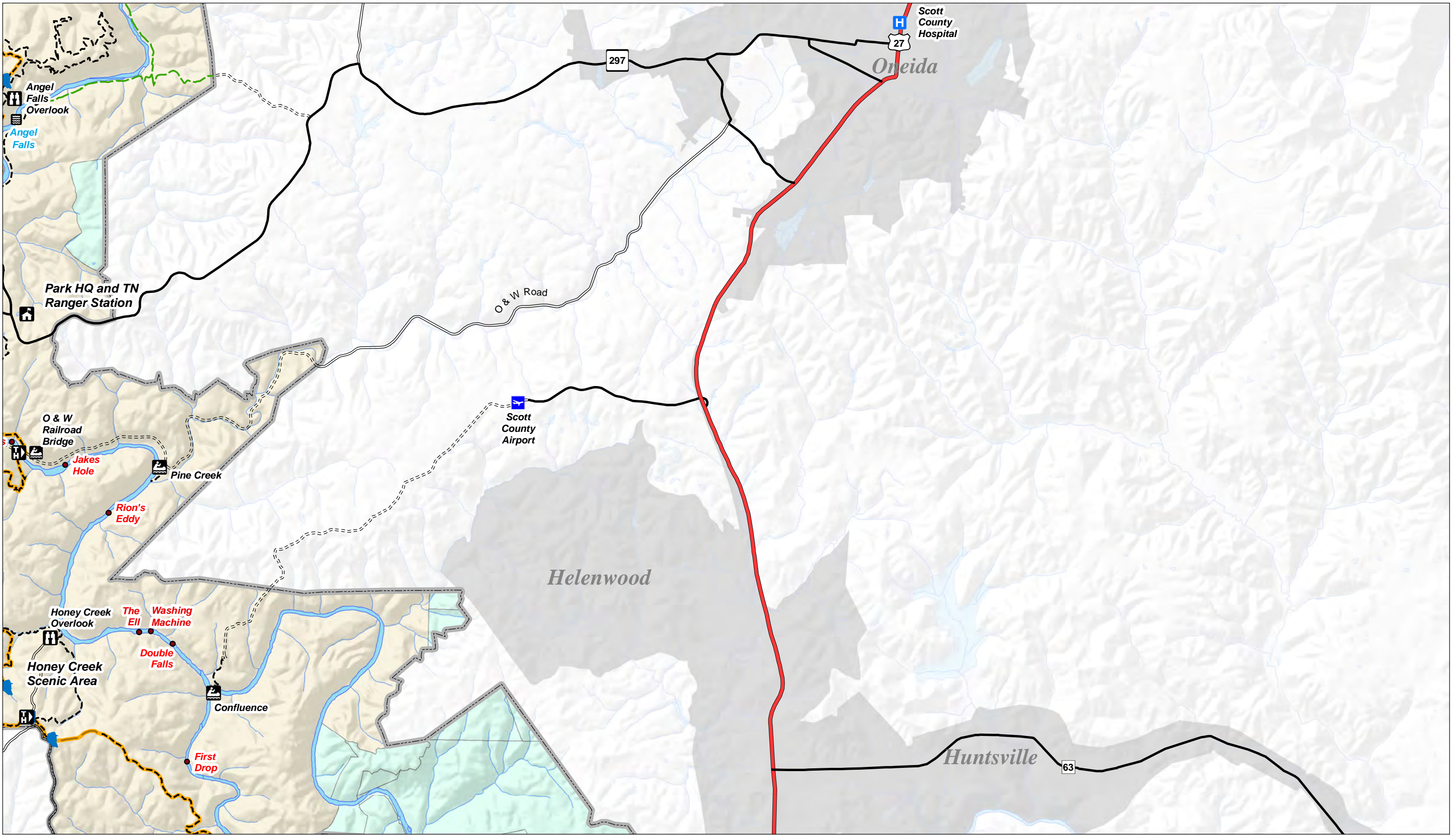
- | | | | | | | | | | | | |
|--|--|--|--|--|--|--|--|--|--|--|--|
| | | | | | | | | | | | |
|--|--|--|--|--|--|--|--|--|--|--|--|



1:48,000

Sheet 6 of 9





Road and Trails

National Trails

--	--

Land Ownership

	National Park Service
	Private
	Scott State Forest

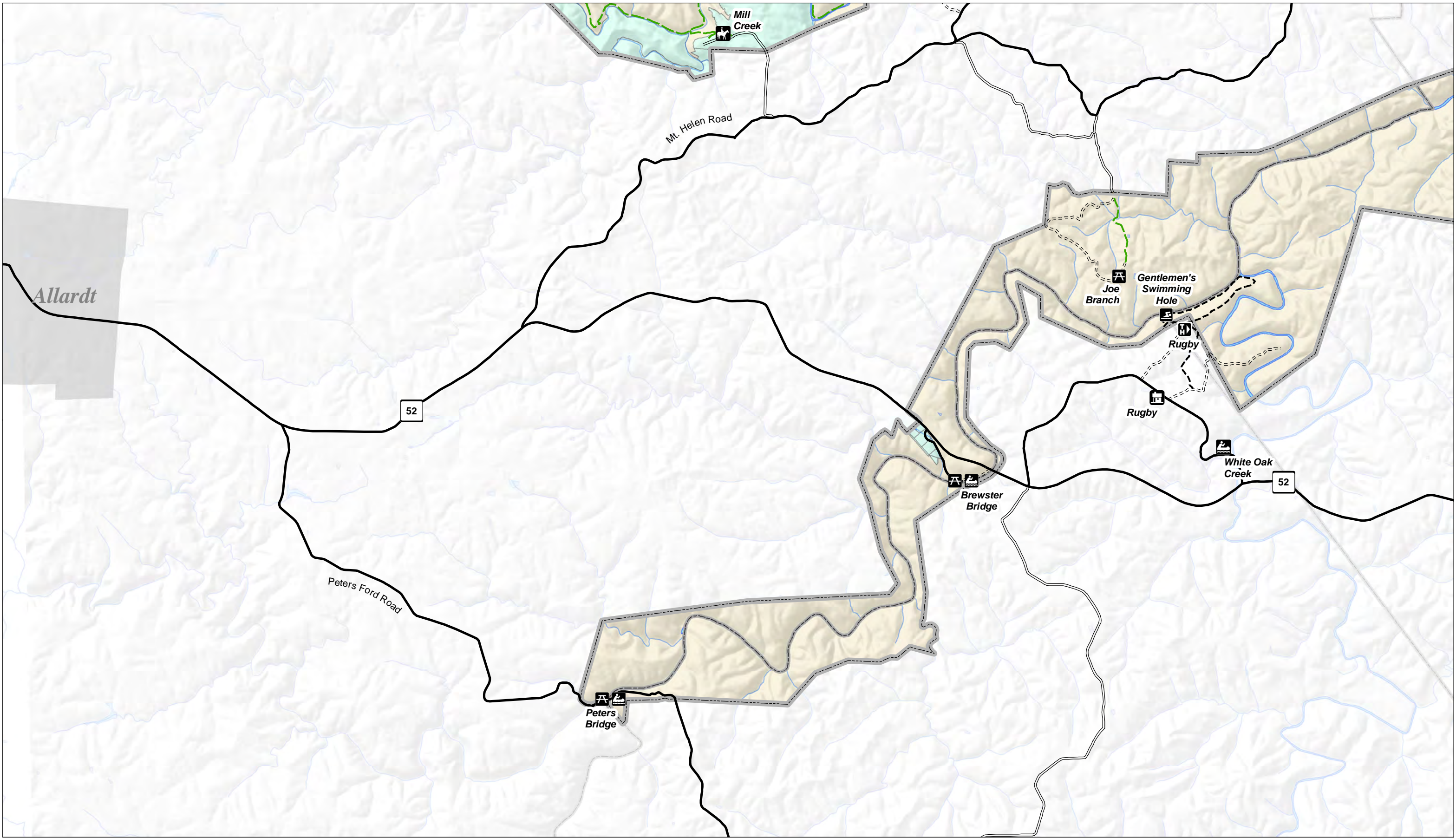
Points of Interest



1:48,000

Sheet 7 of 9

0 0.25 0.5 1 1.5 2 Miles



Road and Trails

--	--	--	--	--	--	--	--	--	--

National Trails

--	--

Land Ownership

	National Park Service
	Private
	Scott State Forest

Points of Interest

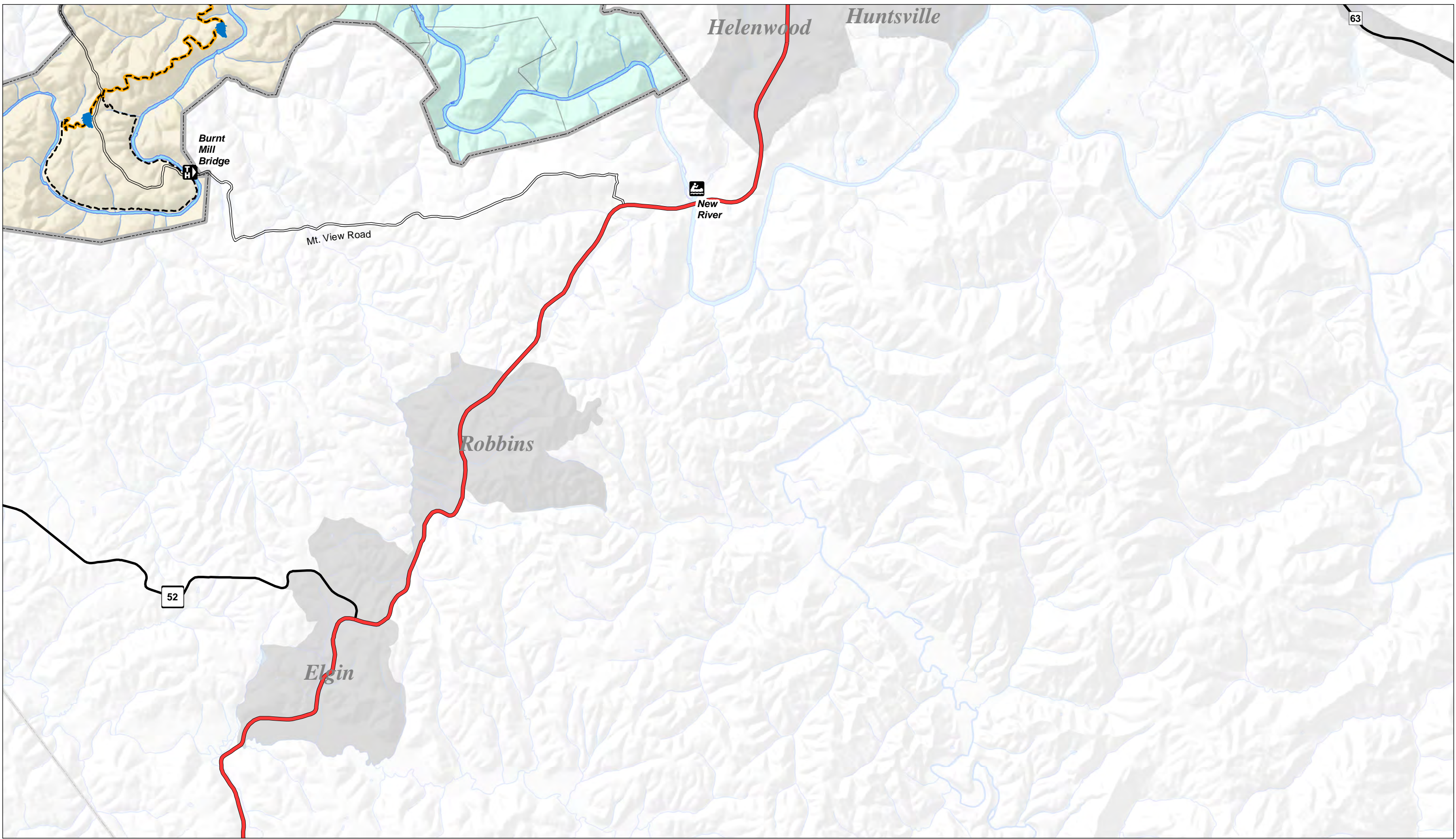
--	--	--	--	--	--	--	--	--	--	--	--



1:48,000

Sheet 8 of 9

0 0.25 0.5 1 1.5 2 Miles



Road and Trails

	Hike		Wagon		Improved Gravel Road		Railroad
	Horse		Multiple Use Trail		Unimproved Road		
	Mountain Bike		Paved Road		Federal Highway		

National Trails

	Shelton Trace
	John Muir Trail

Land Ownership

	National Park Service
	Private
	Scott Slate Forest

Points of Interest

	Ranger Station		Picnic Area		Airport
	Visitor Center		Camping		Hospital
	Overlook		Hiking Trailhead		Arch
	Boat Launch		Horse Trailhead		Waterfall



1:48,000

Sheet 9 of 9

0 0.25 0.5 1 1.5 2 Miles